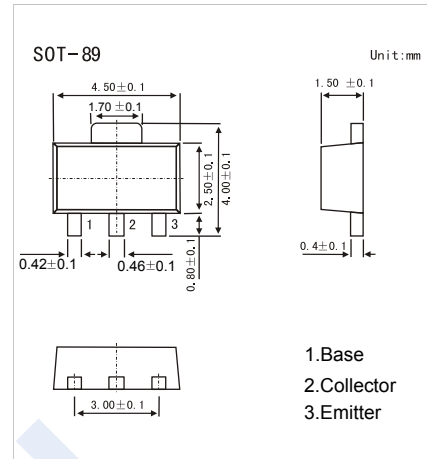
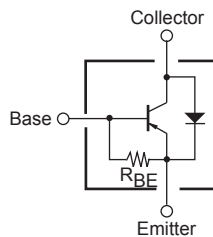


## PNP Transistors

### 2SB1397

#### ■ Features

- Low collector to emitter saturation voltage
- Large current capacity
- Complementary to 2SD2100



#### ■ Absolute Maximum Ratings $T_a = 25^\circ\text{C}$

Parameter	Symbol	Rating	Unit
Collector - Base Voltage	$V_{CB0}$	-25	V
Collector - Emitter Voltage	$V_{CE0}$	-20	
Emitter - Base Voltage	$V_{EB0}$	-6	
Collector Current - Continuous	$I_C$	-2	A
Collector Current - Pulse	$I_{CP}$	-4	
Collector Power Dissipation	$P_C$	1.3	W
Junction Temperature	$T_J$	150	$^\circ\text{C}$
Storage Temperature range	$T_{stg}$	-55 to 150	

#### ■ Electrical Characteristics $T_a = 25^\circ\text{C}$

Parameter	Symbol	Test Conditions	Min	Typ	Max	Unit
Collector- base breakdown voltage	$V_{CB0}$	$I_C = -100 \mu\text{A}, I_E = 0$	-25			V
Collector- emitter breakdown voltage	$V_{CE0}$	$I_C = -10 \text{ mA}, R_{BE} = \infty$	-20			
Emitter - base breakdown voltage	$V_{EB0}$	$I_E = -100 \mu\text{A}, I_C = 0$	-6			
Collector-base cut-off current	$I_{CB0}$	$V_{CB} = -20\text{V}, I_E = 0$			-1	$\mu\text{A}$
Emitter cut-off current	$I_{EB0}$	$V_{EB} = -5\text{V}, I_C = 0$			-0.1	
Collector-emitter saturation voltage	$V_{CE(sat)}$	$I_C = -1 \text{ A}, I_B = -50 \text{ mA}$		-0.25	-0.5	V
Base - emitter saturation voltage	$V_{BE(sat)}$	$I_C = -1 \text{ A}, I_B = -50 \text{ mA}$			-1.5	
DC current gain	$h_{FE}$	$V_{CE} = -2\text{V}, I_C = -500 \text{ mA}$	70			
		$V_{CE} = -2\text{V}, I_C = -2 \text{ A}$	50			
Base to emitter resistance	$R_{BE}$				1.6	$\text{k}\Omega$
Diode forward voltage	$V_F$				-1.5	V
Collector output capacitance	$C_{ob}$	$V_{CB} = -10\text{V}, I_E = 0, f = 1\text{MHz}$		40		$\text{pF}$
Transition frequency	$f_T$	$V_{CE} = -2\text{V}, I_C = -500 \text{ mA}$		300		MHz

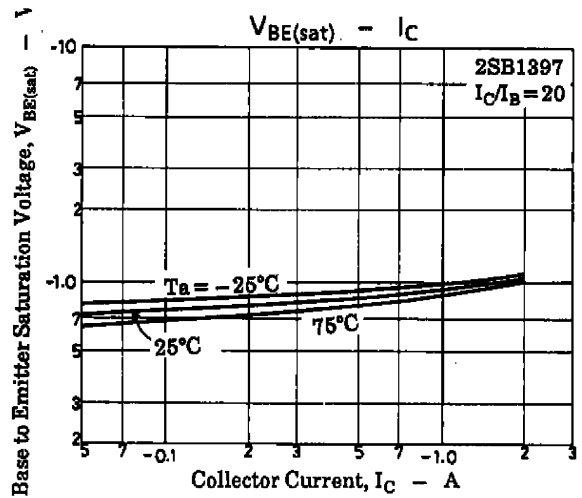
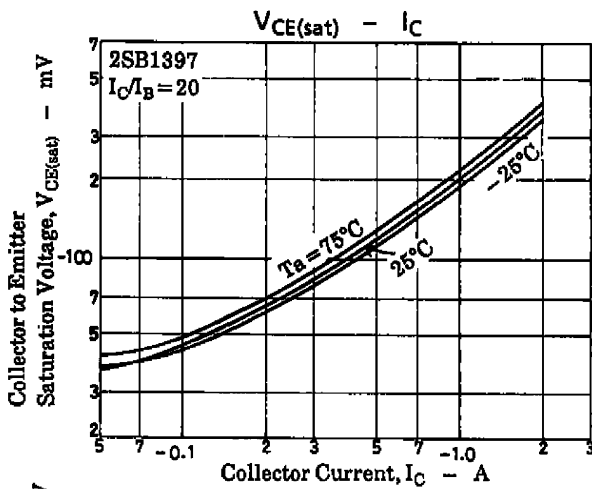
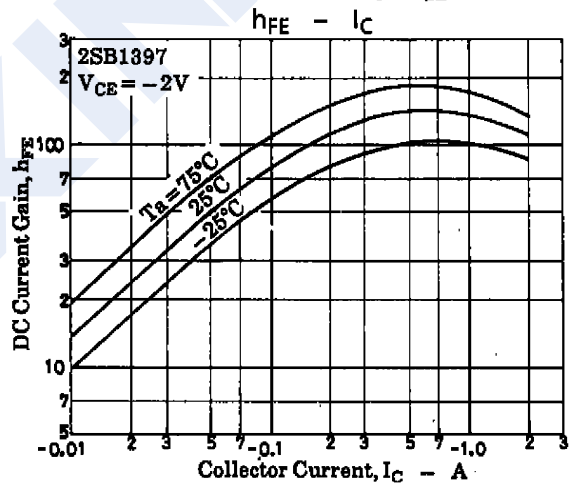
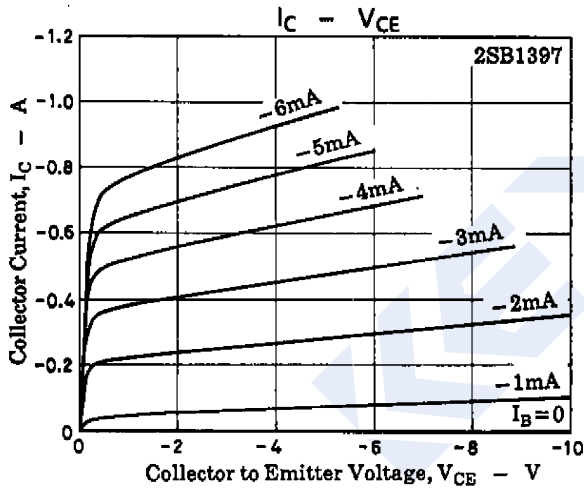
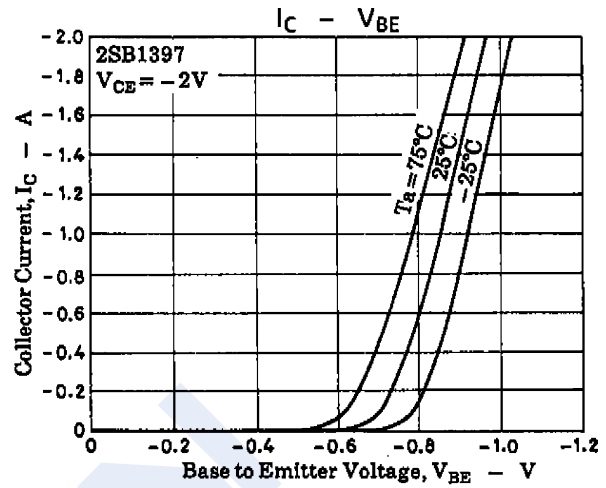
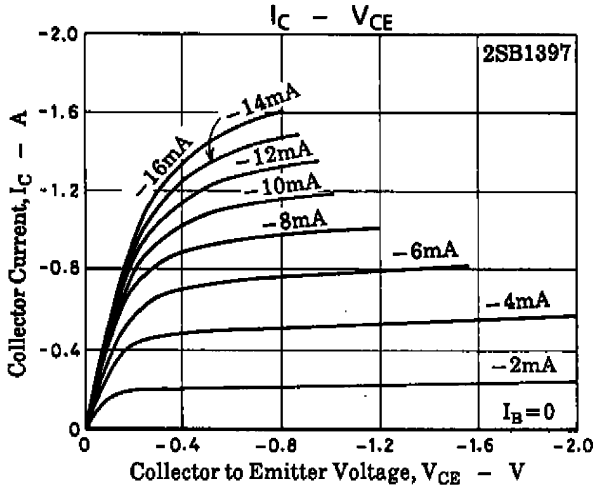
#### ■ Marking

Marking	BP
---------	----

### PNP Transistors

### 2SB1397

■ Typical Characteristics



### PNP Transistors

### 2SB1397

■ Typical Characteristics

